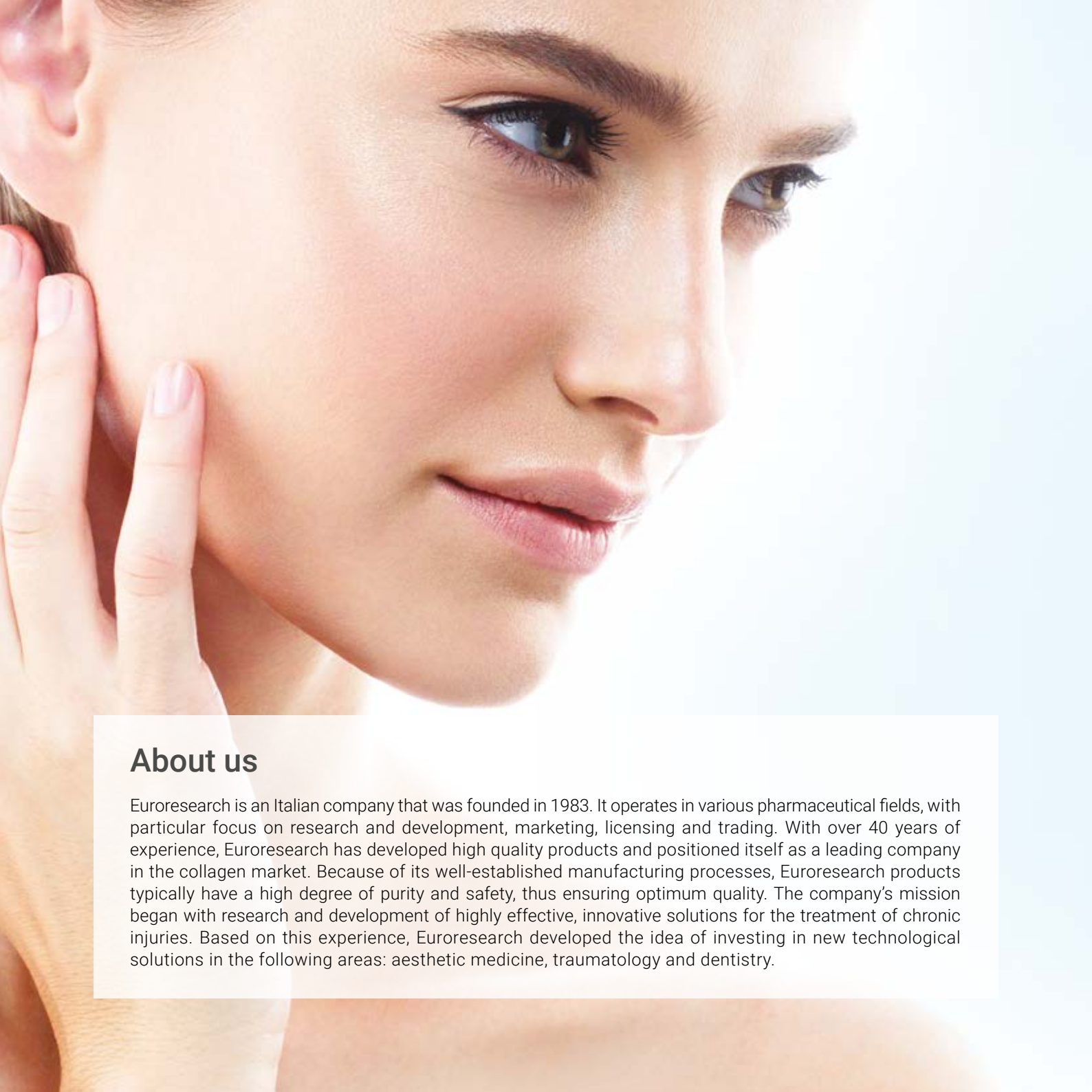


Nithya Application
& Injection points



nithya

Endless beauty



About us

Euroresearch is an Italian company that was founded in 1983. It operates in various pharmaceutical fields, with particular focus on research and development, marketing, licensing and trading. With over 40 years of experience, Euroresearch has developed high quality products and positioned itself as a leading company in the collagen market. Because of its well-established manufacturing processes, Euroresearch products typically have a high degree of purity and safety, thus ensuring optimum quality. The company's mission began with research and development of highly effective, innovative solutions for the treatment of chronic injuries. Based on this experience, Euroresearch developed the idea of investing in new technological solutions in the following areas: aesthetic medicine, traumatology and dentistry.



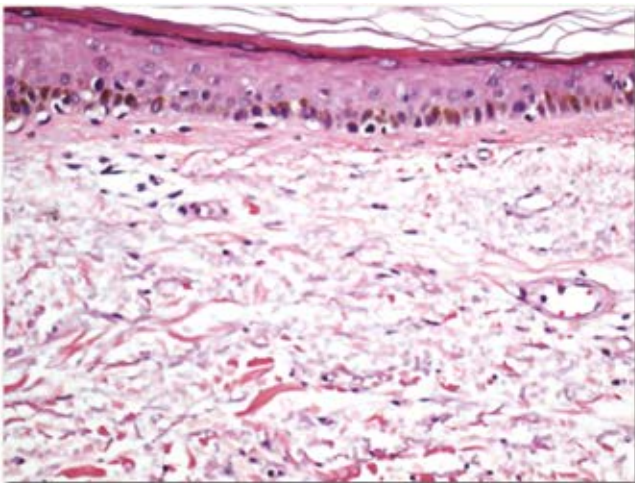
Nithya Collagen

The mechanism of action of type I collagen is currently the subject of renewed interest thanks to the discovery of new molecular mechanisms involved in homeostasis of the extracellular matrix (ECM). The most recent findings regarding the ECM highlight the importance of molecular analysis in understanding the mechanisms ensuring homeostasis and the alterations occurring in fibrotic processes. Nithya is composed of heterologous native type I collagen micro-particles. A proprietary extraction technology produces a collagen with biomimetic properties that simulate polymerized collagen breakdown and thus stimulate fibroblast clustering and the deposition of procollagen and, as a consequence, type IV endogenous collagen.

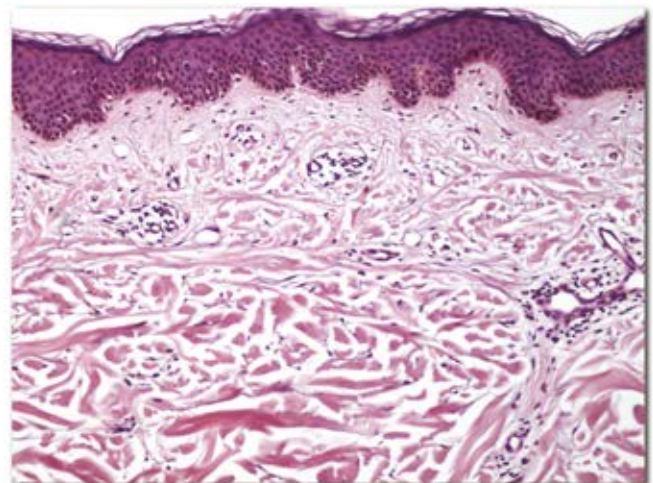
Starting from the premise that normal skin has an overall negative ionic charge while the cellular membranes in aging skin has a greater positive ionic charge, the process of micronization - producing biomimetic collagen microfibrils - improves the hydrophylic properties of type I collagen, giving a negative charge to the molecule.

Thus charged, the collagen binds with tissue and remains bound longer, thus optimizing the disaggregation process of its triple helix structure. Type I collagen binds to and exerts traction on type IV collagen fibrils on the surface of the fibroblast membrane, transducing this mechanical action into the production of new ECM (mechanotransduction). The type I collagen binds to type IV collagen in the ECM, giving rise to the process of mechanotransduction.

After 6 hours



After 15 days





Nithya protocol face

Medical Device CE, Class III. Injectable Nithya is available in packages of three 70 mg vials.

Indications

- For treating chrono - and photoaging of face, neck and hands
- For the regeneration of dermal and subdermal connective tissue via stimulation of fibroblasts and neocollagenesis
- For remodelling genetic deformations, such as dermal hypotrophy and hypotonia, and compromised skin elasticity

Instructions for use

Suspend the micronized collagen contained in one vial in 5 ml of physiological solution.
Each vial of micronized collagen powder must be put into suspension immediately before use.

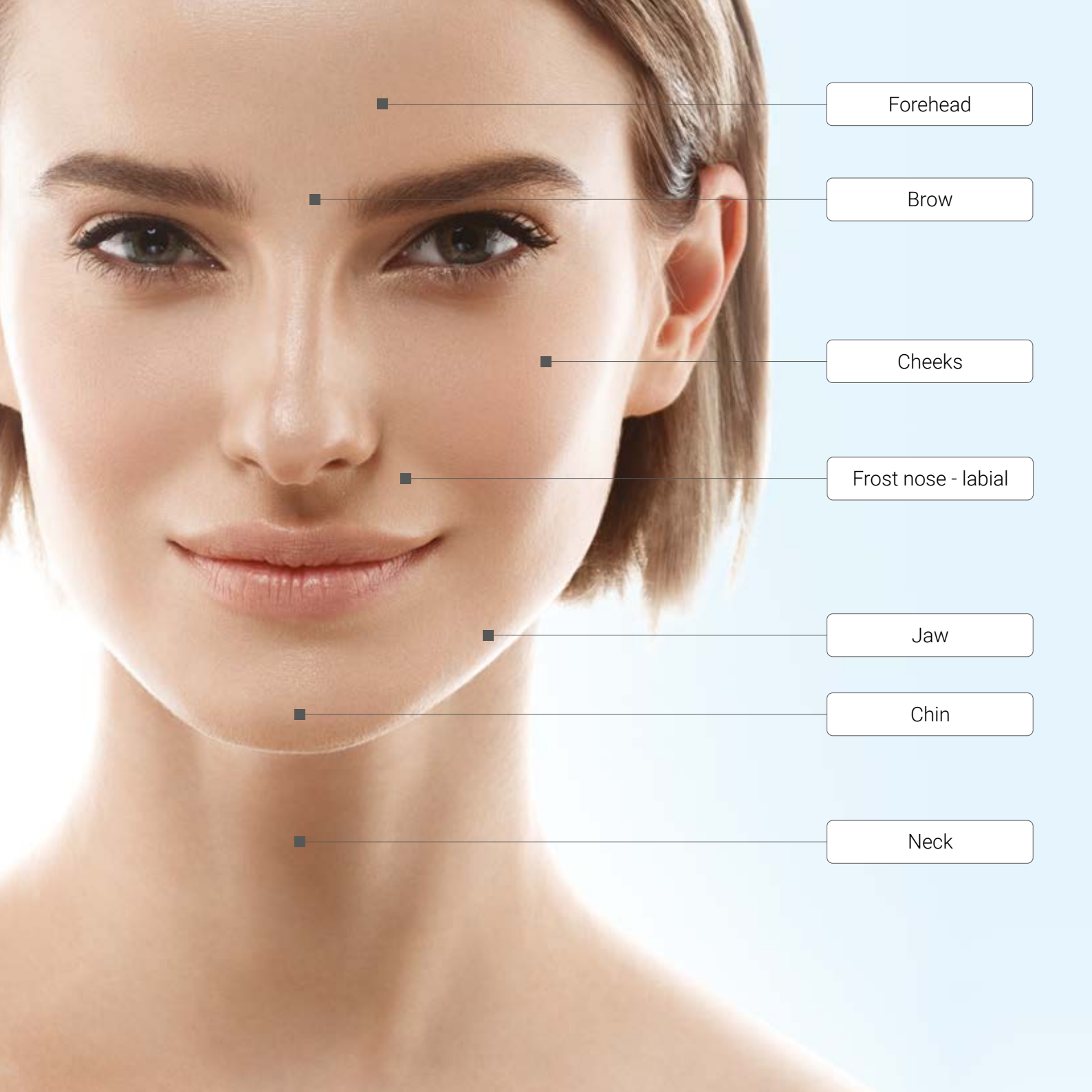
Protocol: Injection points

Divide the 5 ml of collagen suspension into five 1 ml syringes. This will facilitate distribution of the product: face (2-3 ml), neck (0.5-1 ml), décolleté (0.5-1 ml), and hands (0.5 ml). The product should be injected around the mouth and eyes in micro-punctures (0.1-0.2 ml and/or 0.05 ml each). Administer using fine needles (30-34 G) at the deep dermal level or at the dermal-subdermal interface (4 mm needle).

Frequency of treatment

Every 15-20 days from the first administration for a total of 30 days. The protocol is geared to cell regenerative turnover, which is characterized by an average cycle of 14-15 days, and thus it is very important to observe the treatment timeline to ensure a constant cell regeneration rate. A recall dose should be administered one month after the end of the protocol, and the treatment cycle should be repeated 3-6 months later depending on physician's judgement and results.





Forehead

Brow

Cheeks

Frost nose - labial

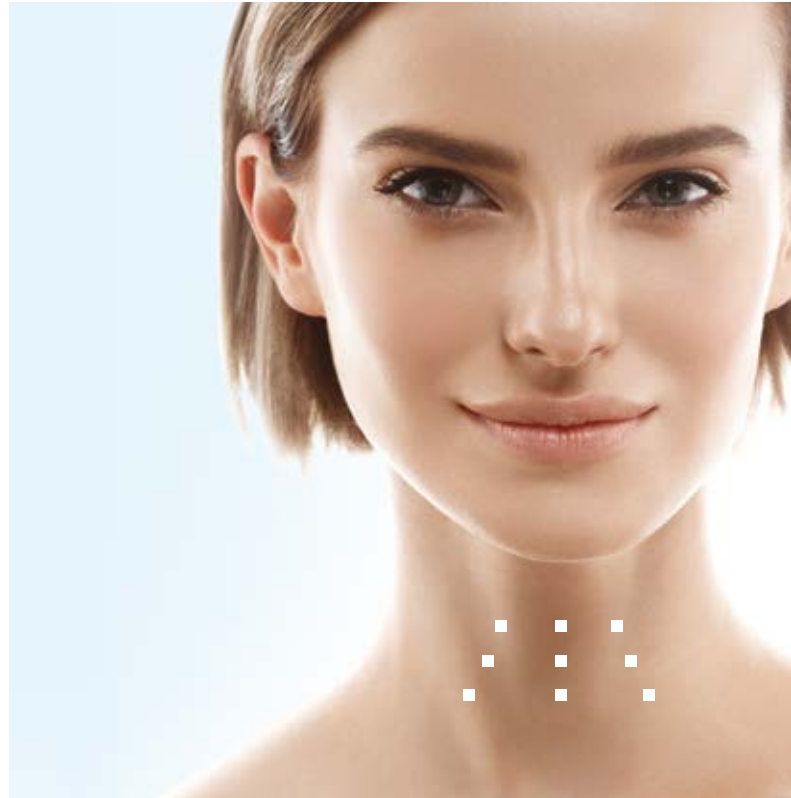
Jaw

Chin

Neck



Areas of treatment: Injection points



Face

- Quantity 0,1 ml
Distance 2 cm
18 injection points = 1,8 ml
- Quantity 0,05 ml
Distance 1 cm
23 injection points x 0,05 ml = 1,15 ml

Neck

- Quantity 0,05 ml
Distance 2 cm
9 injection points x 0,05 ml = 0,45 ml



Areas of treatment: Injection points



Décolleté

- Quantity 0,1 ml
Distance 2 cm
11 injection points x 0,1 ml = 1,1 ml

Hands

- Quantity 0,05 ml
Distance 1 cm
10 injection points (2x5 on hand after 0,05 ml) = 0,5 ml



Nithya protocol body

Medical Device CE, Class III. Injectable Nithya is available in a package containing one 200 mg vial.

Indications

- For treating cellulite, scars, stretch marks, sagging following aesthetic surgery such as liposuction
- Nithya Body is also indicated for treating body blemishes arising from chronoaging

Instructions for use

Suspend the micronized collagen in the vial in 10 ml of physiological solution.

Protocol: Injection points

Each vial of micronized collagen powder must be put into suspension immediately before use.

Divide the 10 ml of collagen suspension into four 2.5 ml syringes.

This will facilitate distribution of the product:

- Inner arm and thigh, inject 0.1 ml of suspension at each puncture point at the deep dermal level using a 4 mm 30 G needle;
- Stretch marks, tunnelling technique, injecting 1 cc of suspension using a 13 mm, 30 G needle;
- Abdomen, micro injections of 0.2 ml every 2 cm using a 4 mm 30 G needle.

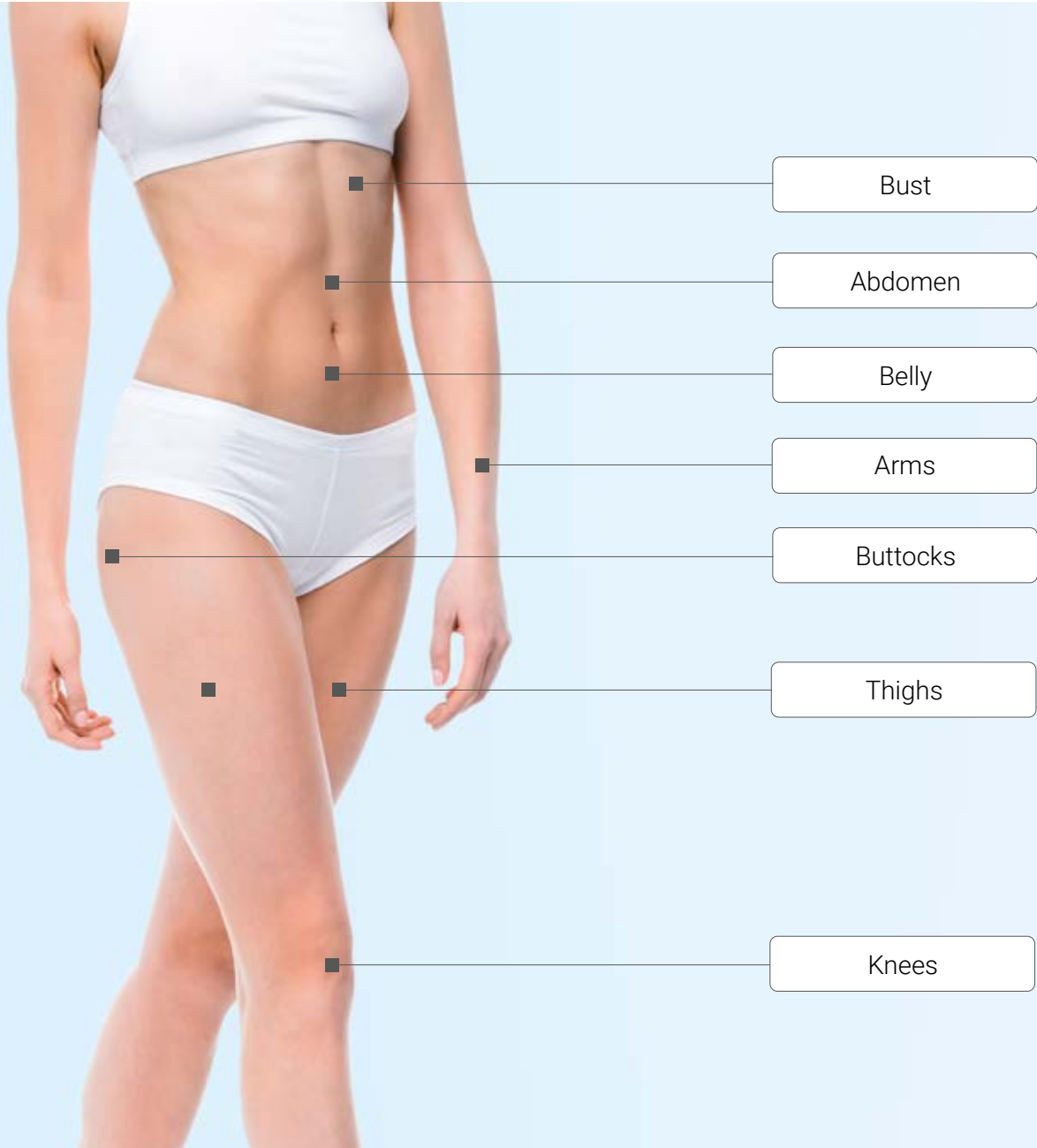
Frequency of treatment

Results are already visible from the first application; however, to achieve a longer-lasting effect, it is recommended to perform at least three treatments at three-week intervals with a recall dose one month later. The frequency of treatment depends on objectives, conditions of the patient and clinical assessment.





Areas of treatment: Injection points





After post Nithya collagen treatment Nithya protocol face - cream

Medical Device CE. Available as a lotion in a 100 ml tube.

The fluid cream made of collagen and elastin is indicated for the firming and moisturising of all skin types. It is suitable for use after aesthetic surgery treatments such as liposuction, abdominoplasty or body sculpture, once the skin has fully healed.

Indications

Collagen helps to provide the necessary support structure to the dermis, moisturising it and contrasting the relaxation processes, giving tone and elasticity to the skin.

In addition to collagen, Nithya Body Cream contains:

- Elastin, which helps keep the skin supple;
- Jojoba, which counteracts two major causes of skin aging: dryness and lipid peroxidation.

Instructions for use

Apply the product morning and evening, promoting its absorption with a light massage. Only for external use.





After post Nithya collagen treatment Nithya protocol body - cream

Medical Device CE. Available as a lotion in a 100 ml tube.

The fluid cream made of collagen and elastin is indicated for the firming and moisturising of all skin types. It is suitable for use after aesthetic surgery treatments such as liposuction, abdominoplasty or body sculpture, once the skin has fully healed.

Indications

Collagen helps to provide the necessary support structure to the dermis, moisturising it and contrasting the relaxation processes, giving tone and elasticity to the skin.

In addition to collagen, Nithya Body Cream contains:

- Elastin, which helps keep the skin supple;
- Jojoba, which counteracts two major causes of skin aging: dryness and lipid peroxidation.

Instructions for use

Apply the product morning and evening, promoting its absorption with a light massage. Only for external use.





nithya

Endless beauty

nithya.it

EURORESEARCH 
natural growing. natural healing

Euroresearch S.r.l.
Corso Venezia 5
20121 Milan / IT

Tel. +39 02 8055660
marketing@euroresearch.it
www.euroresearch.it